

Venue Information

Welcome to S4 Swim School

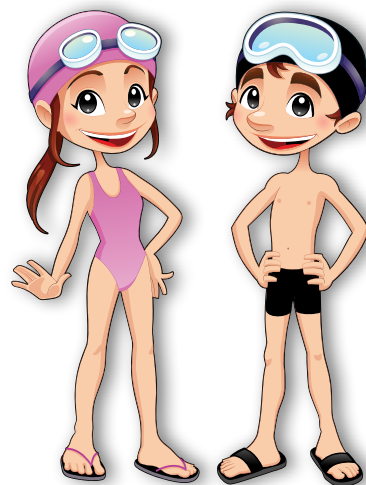
This booklet will give you the addresses and venue information for the swimming pools that we use for our swimming lessons.

Please read through carefully as each venue has specific instructions on parking, arrival procedures and spectating.

If you wish to change to another venue (depending on availability), please email the session supervisor for your session. Their contact details can be found with the swimming pool information.

We look forward to seeing you at your next swimming lesson.

S4 Swim School



Streetsbrook School

Address:

Ralph Road
Shirley
Solihull
B90 3LB

Parking:

Parking is available on Ralph Road. You are NOT allowed to park in the school car park.

Pool Information:

The swimming pool is 15 metres x 6 metres. The swimming pool is 0.75 metres deep throughout. There is NO photography/filming at this swimming pool.

Arrival:

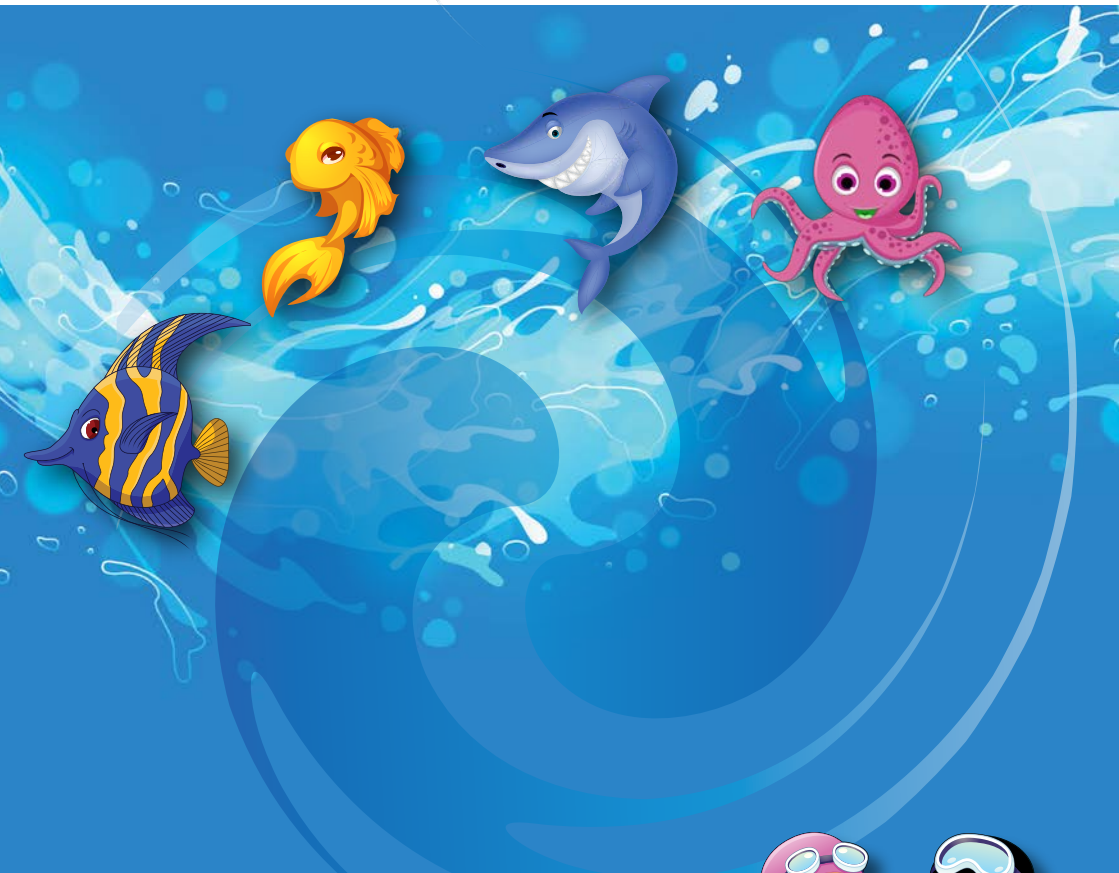
On arrival to the school walk through the main school gates and head towards the school reception. As you approach the school reception (do not go to reception) keep to your right (passing classrooms on your left-hand side) and the swimming pool is in a separate building on your right-hand side.

Spectating:

There are seating areas available on poolside. We ask that shoes are NOT worn on poolside.

Session Supervisor:

For any questions/queries please email stephaniemorgan@s4swimschool.co.uk



A commitment to continuing
swimming development

www.s4swimschool.co.uk

